

CHEC DTH.350 Theatre AV Operation Guide

Source/Input Selection to Preview

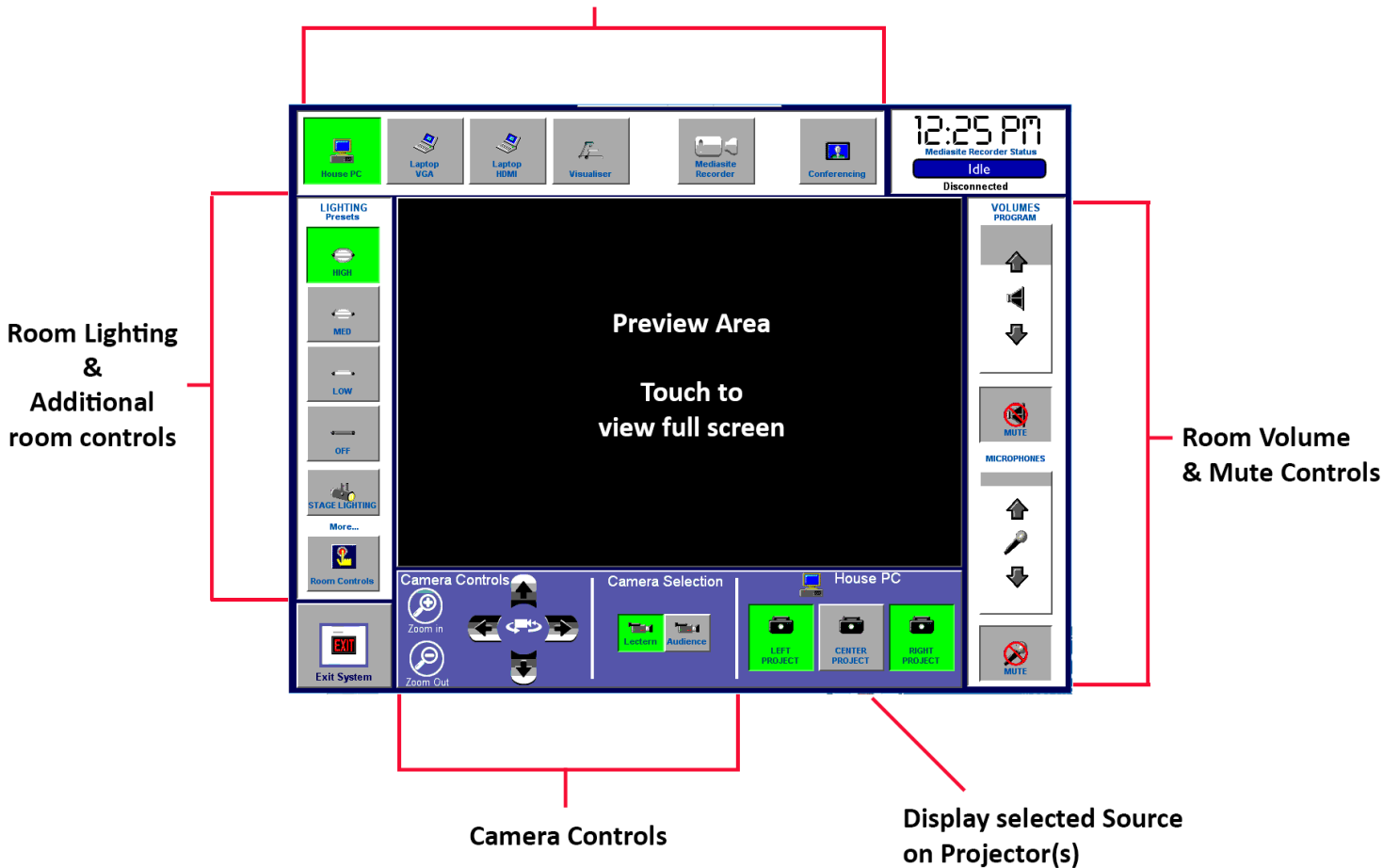


Table of Contents

1	Start Up Screen.....	3
2	Computer (House PC).....	4
3	Laptop PC	5
4	Visualiser.....	6
5	Zoom/Teams/Software Collaboration.....	7
6	Room Combine (DTH.150 / DTH.350)	8
7	Theatrical Stage Lighting	9
	Finish.....	11

1 Start Up Screen

INPUT SOURCES: The top of the screen contains the buttons to select the chosen image source. These will be explained further in this document.



This is the main control screen. The centre of the screen displays the start up image. The screen is “touch” sensitive. Controls are operated by touching the buttons on the perimeter of the monitor display. Touching a button selects the chosen activity.

Lighting:

House & Theatre lighting is controlled by selecting the chosen light level button(s) located on the left of the screen.

Room Controls:

The Room Controls button allows control of screens, curtain, Spot / Flood lights etc. Control options will vary according to room capability.

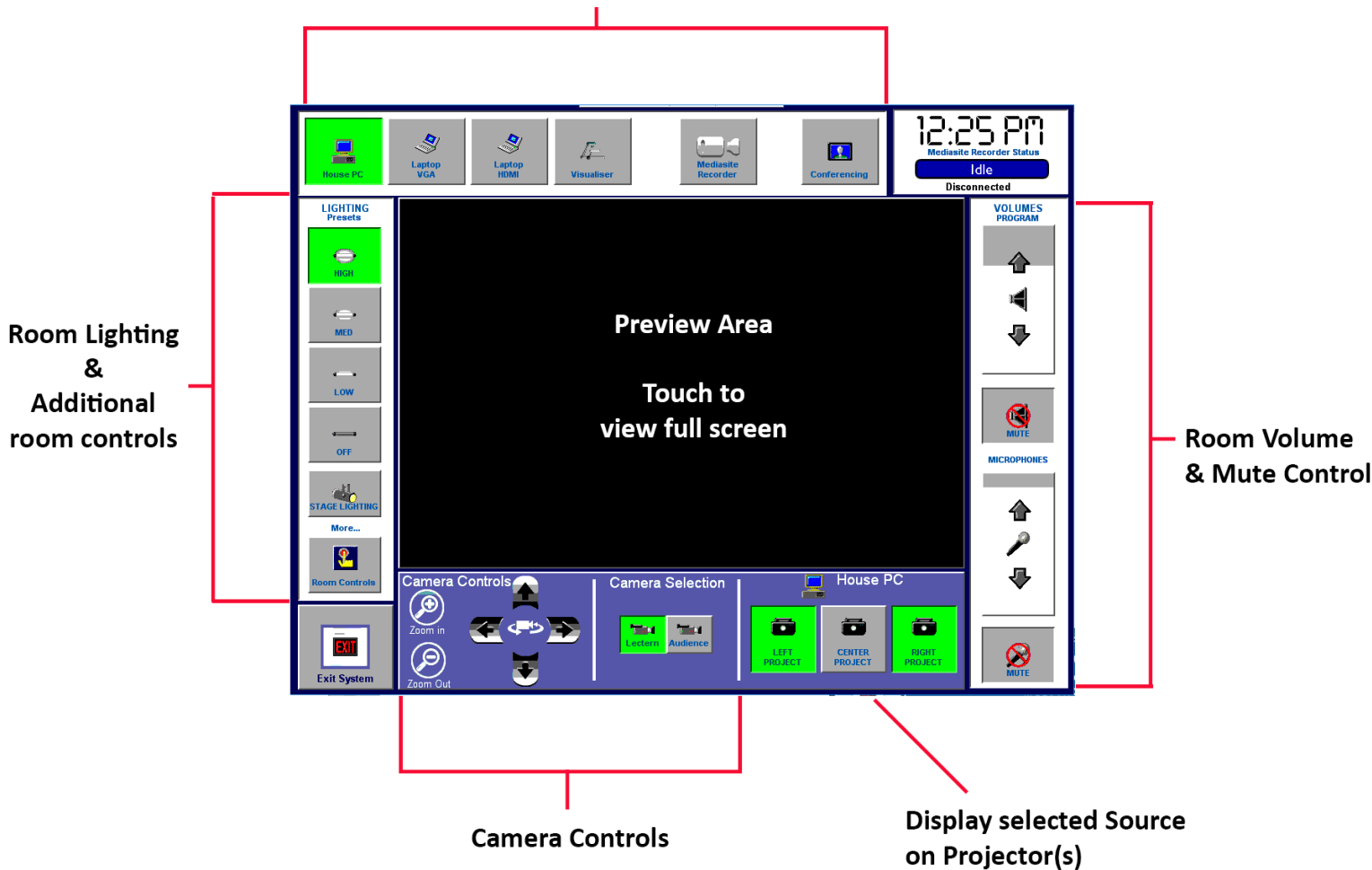
Volume/Mutes:

Program Volume/Mute. The buttons on the right of the screen are the volume controls for what is heard in the room. The Program volume adjusts volume for the last input source projected (House PC/ Laptop Etc).

Microphone Volume/Mute. These buttons control the volume for microphones lectern, cordless and lapel as **heard in the room only**. These controls **DO NOT** control or affect microphone volume or mutes for video conferencing.

2 Computer (House PC)

Source/Input Selection to Preview



To select the computer, touch House PC button –



The House PC button changes from grey to green when selected. This will result in the screen changing to display the PC. Click the mouse to begin login. If the screen is black, the PC is turned off:

To make the computer display full screen on the touch panel, touch the screen anywhere within the computer display, to return touch the screen anywhere.

To display the PC on the projector screens. Press **PROJECT** buttons on the lower right. The selected projectors will activate the screens and turn on the projector. The Project button will illuminate green to indicate the select source is being shown on the projector. Use the Camera controls to select camera and adjust camera position and zoom for software based video collaboration applications (Zoom / Teams etc).

Camera Controls. Use the camera controls to select camera, camera position and zoom for use in software video collaboration applications on the house PC.

3 Laptop PC

To connect and display a laptop, locate the provided HDMI or VGA cable and connect it to your Laptop:

Note, If your laptop does not have these connections, you will need to provide your own adaptor to convert to either VGA or HDMI.



Laptop VGA + 3.5mm Audio Cable



Laptop HDMI Cable

Press the Laptop VGA' or 'Laptop HDMI' source button at the top of touch screen:



This button will change to green when selected. This will result in the preview area of the screen changing to display your laptop

To make the laptop full screen on the touch panel, touch the screen anywhere within the computer display, to return touch the screen anywhere.

Log onto the computer in accordance with the standard theatre log in procedures

To display the Laptop on the projector screens. Press **PROJECT** buttons on the lower right. The selected projectors will activate the screens and turn on the projector. The Project button will illuminate green to indicate the select source is being shown on the projector

4 Visualiser

To select the Visualiser touch the Visualiser button



This button will change to green when selected.



Note

The visualiser is adjusted by the local controls (on visualiser) and needs to be turned on/off. There are several other adjustments for the visualiser for zoom, light and brightness which you will need to familiarise yourself with. The console controls do not control visualiser operation only the projection of the visualiser image

5 Zoom/Teams/Software Collaboration

Using the House PC, The rooms microphones and Cameras can be utilised for software applications installed on the House PC ONLY. Cameras and Microphones installed in the room cannot be utilised with BYO laptops and devices.

Refer to your organisations IT web portal instructions on access and features available to you

Audio and Microphone Device configuration for Software Applications:

Camera Device to Select in software (Zoom/Teams etc) : **USB Capture AIO**

Microphone Device to Select in software (Zoom/Teams etc): **Analog (USB Capture AIO Analog)**

Speaker Device to Select in Software (Zoom/Teams etc): **Speakers/Headphones (Realtek Audio)**

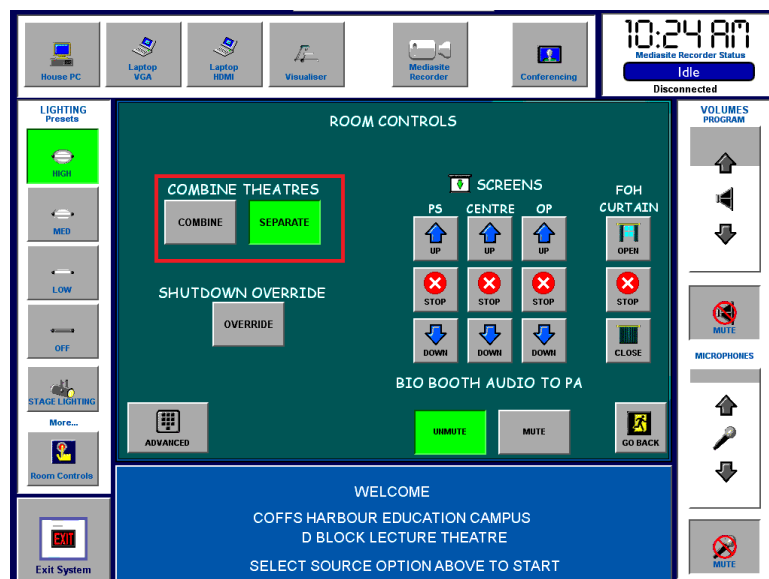
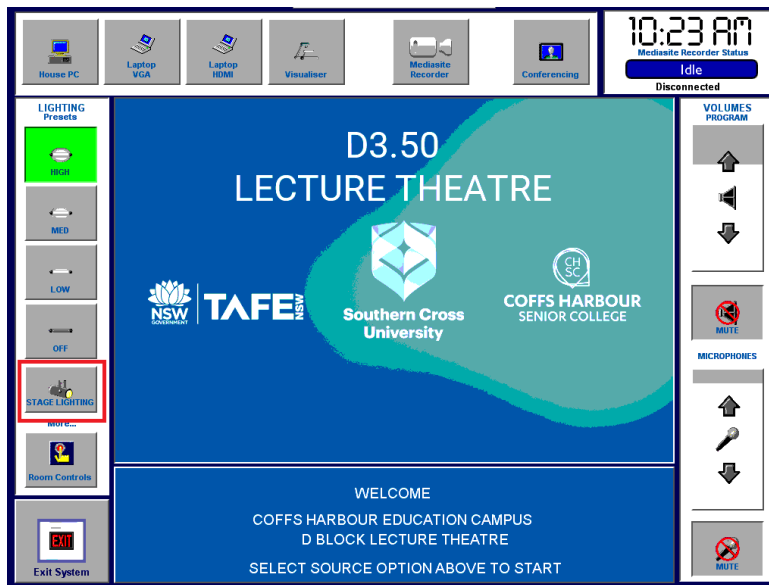
6 Room Combine (DTH.150 / DTH.350)

When using the Full theatre in DTH.500 mode (Partition wall has been opened upto DTH.150), The av system must be put into “**COMBINE MODE**”

Combine Mode will do the following:

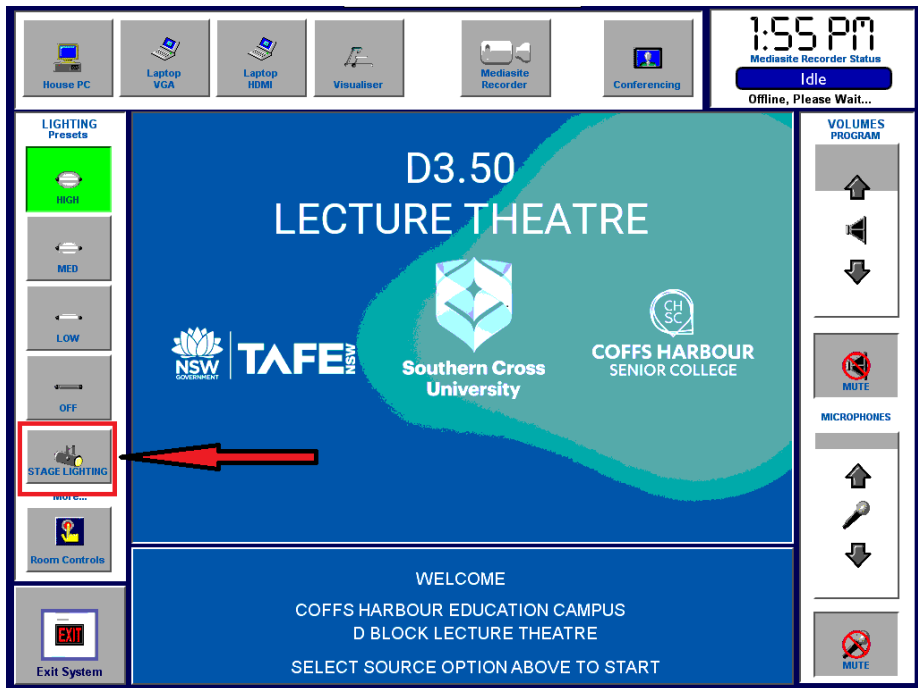
- Send Audio/Mics to the speakers in DTH.150
- Combine control of House lighting.

From the Main Page select the button “**Room Settings**” Then select “**Combine**”



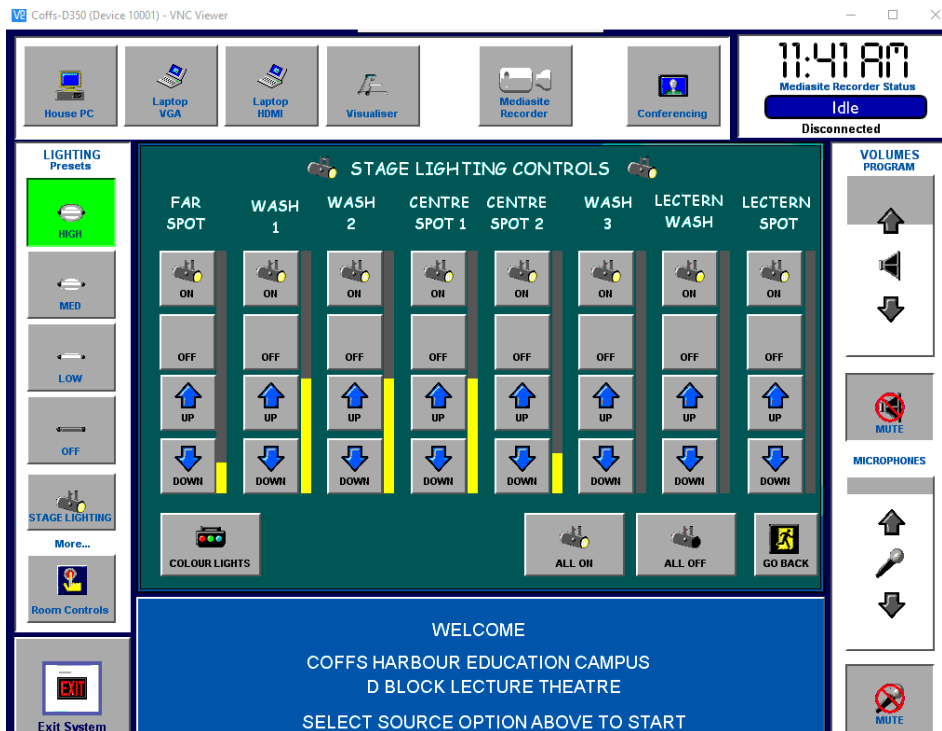
7 Theatrical Stage Lighting

Operation of the theatrical Stage Lighting is via the "Stage Lighting Icon" found on the main page:



Select individual Lights to turn On/OFF or adjust brightness by pressing or holding down the Up/Down arrows:

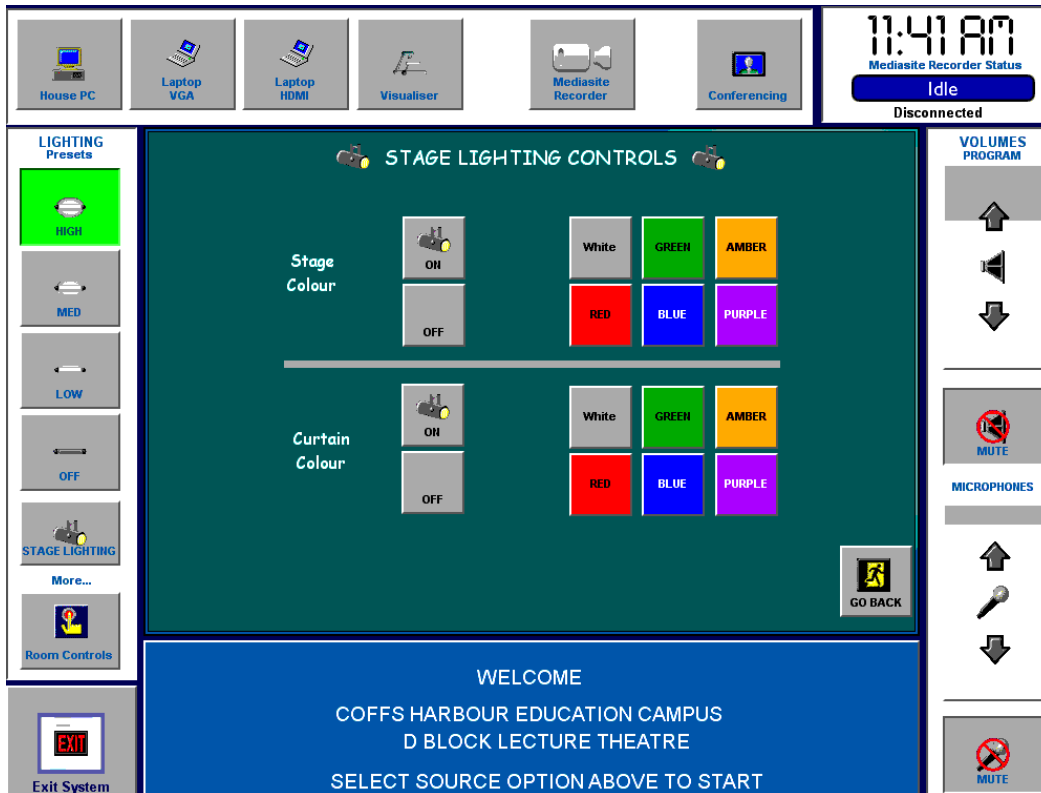
All Lights can also be turned on/off by using the "All On" / "All Off Buttons"



Coloured Lighting:

Press the 'Coloured Lights' icon to access control of coloured lights.

There are options to control coloured lights focused on either the 'Stage area' & 'Curtain'



Note upon 1st Use of the coloured Lighting, a power startup sequence will begin which turns on 240v power to the coloured lighting fixtures:

Shutting down:

When the AV system is shut down via "Exit System"

All lights/power will be turned off

Finish

Upon finishing your session:

- Remove any CDs, USB drives and personal property.
- Log off the House PC (Do not shut down).
- Shut down the AV system by pressing the **“EXIT SYSTEM” Button**.

This will turn off Projectors, Raise screens and Turn off any Theatrical Lighting

After hours USE - IMPORTANT

An automatic timer will turn off all items after a predetermined time.

The timer turns the image sources off at 7:00pm.

This Feature can be turned off via the **“Room Settings”** Page and selecting **“Override”**

Additional Help:

Phone: Use the phone in the room and select the “Service Desk” speed dial button.

Or Phone. 02 66593080